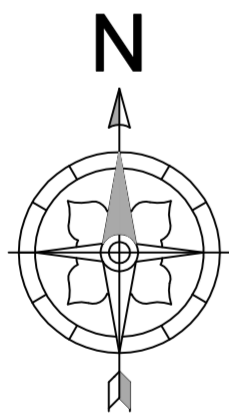
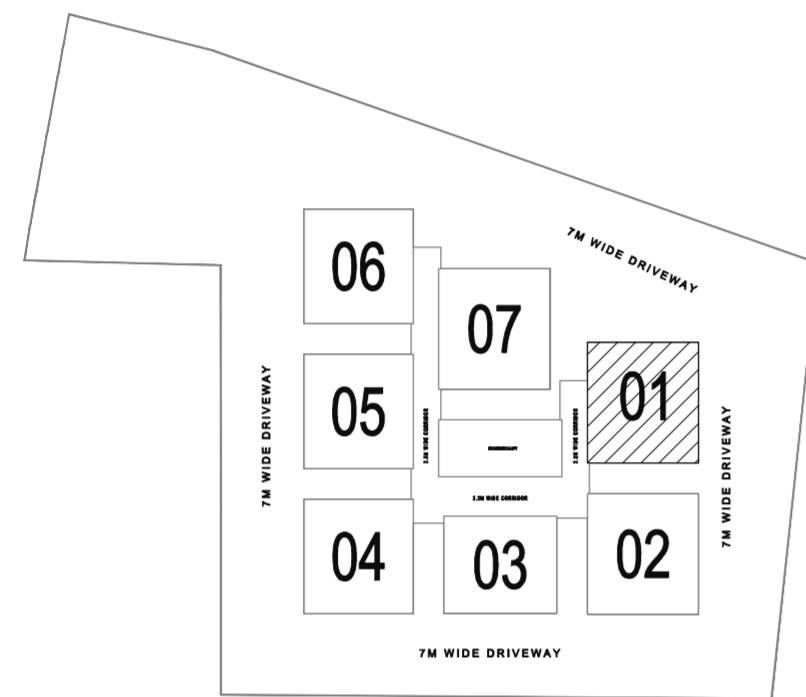


KEY PLAN

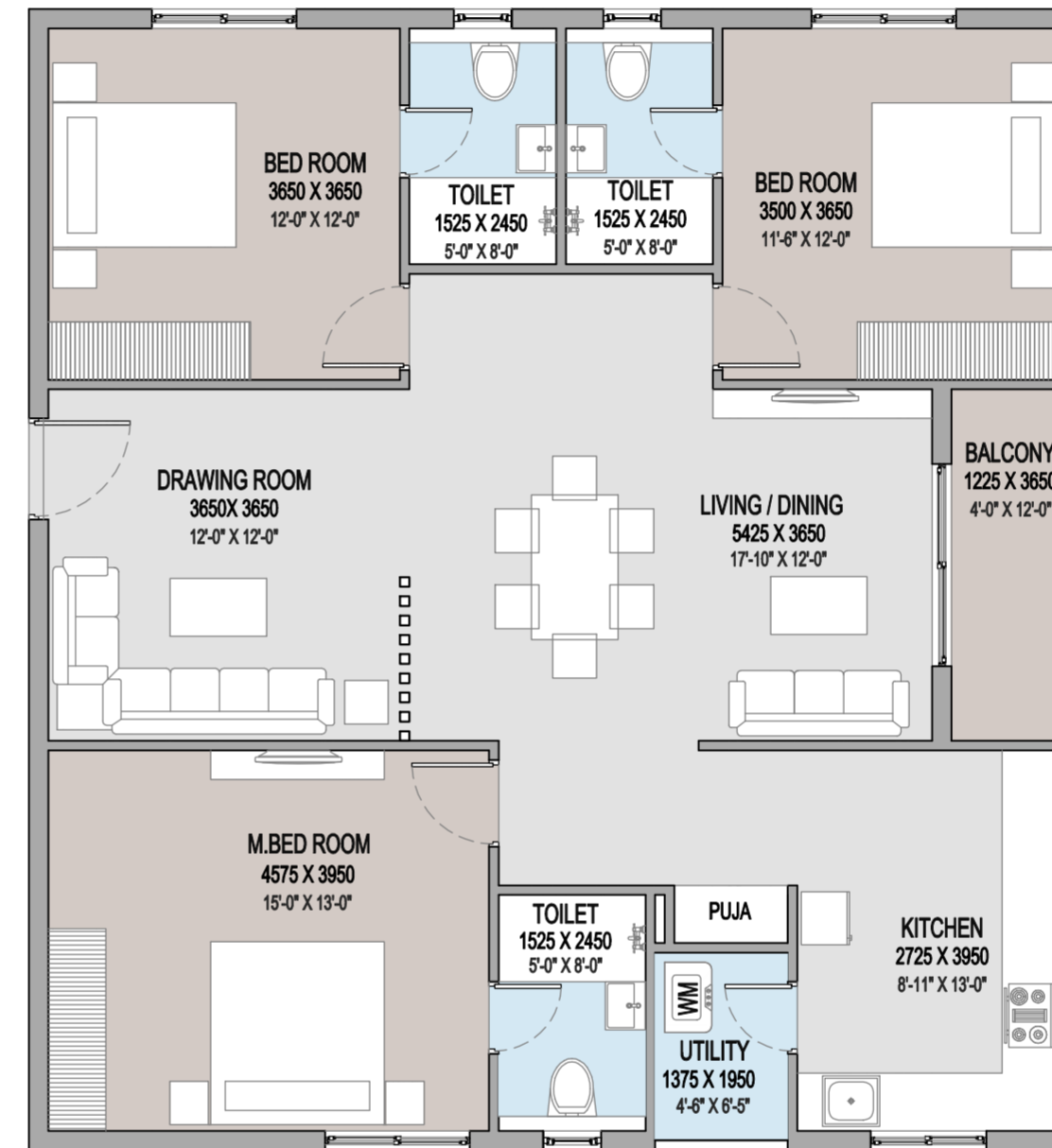


NOTE:

-GROUND FLOOR FLAT NO - 06,07 HAVE BEEN REMOVED FOR GYM AND BANQUET HALL.



2nd Floor, Ravisankar Arcade, behind Care Hospital  
line, Jayabheri Pine Valley, Gachibowli, Hyderabad,  
Mobile no: +91 98858 23482 / 99483 64726



1765 SFT

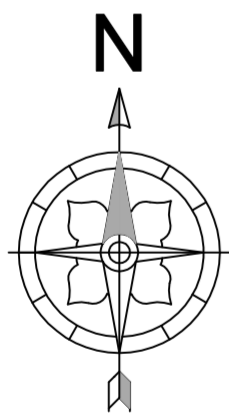
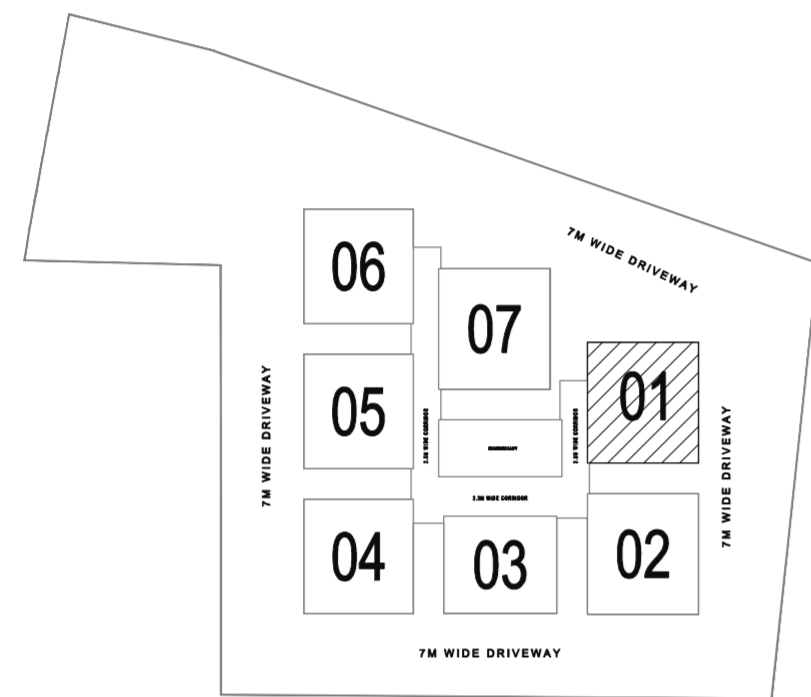
FIRST FLOOR PLAN

WEST FACING (3 BHK)

SALE AREA

1765 Sq.ft

KEY PLAN

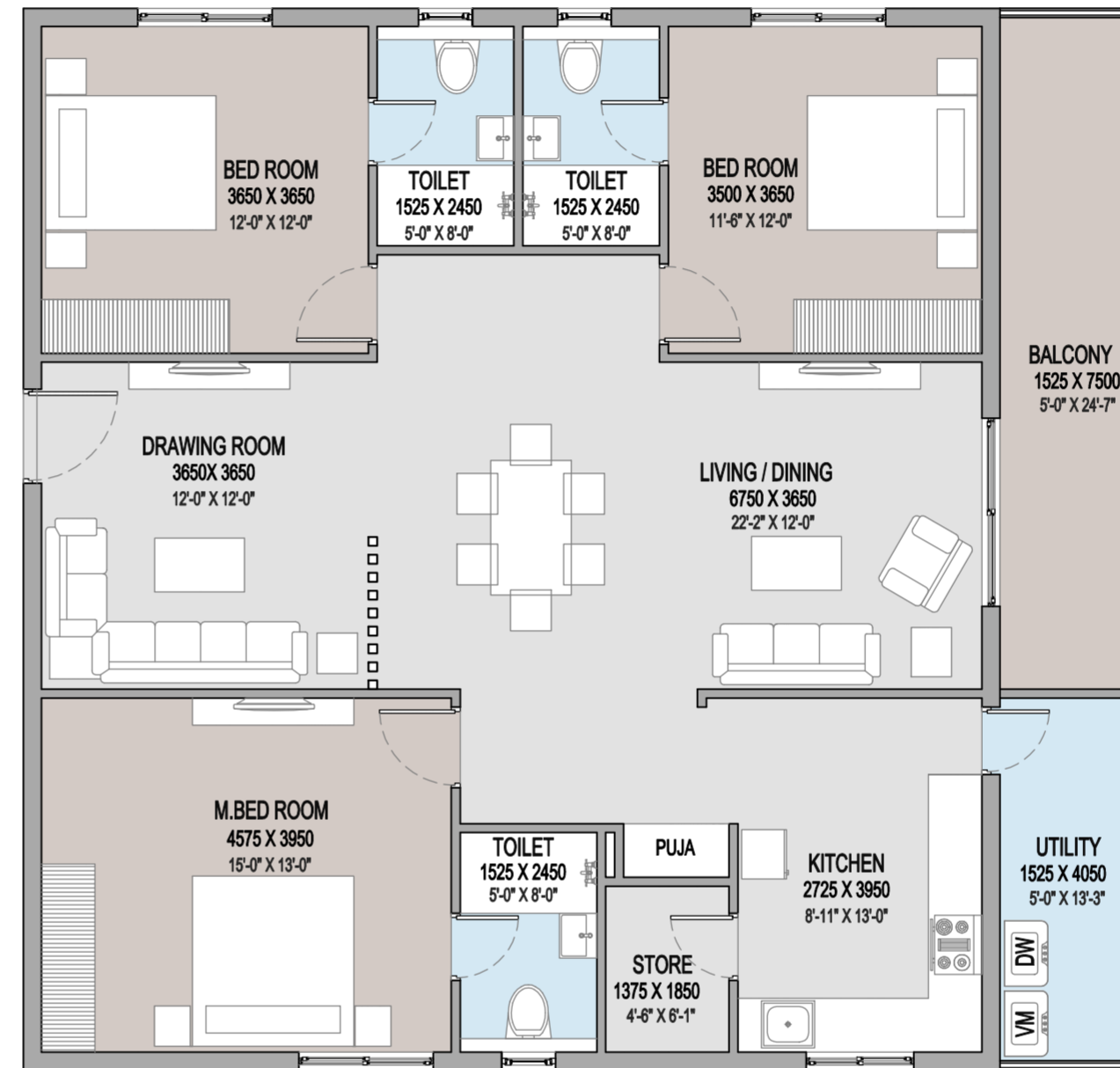


NOTE:

-GROUND FLOOR FLAT NO - 06,07 HAVE BEEN REMOVED FOR GYM AND BANQUET HALL.



2nd Floor, Ravisankar Arcade, behind Care Hospital line, Jayabheri Pine Valley, Gachibowli, Hyderabad, Mobile no: +91 98858 23482 / 99483 64726



2030 SFT

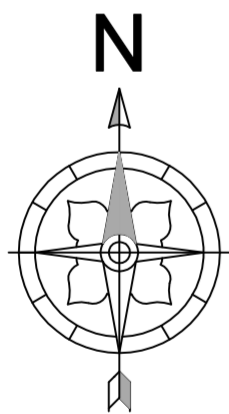
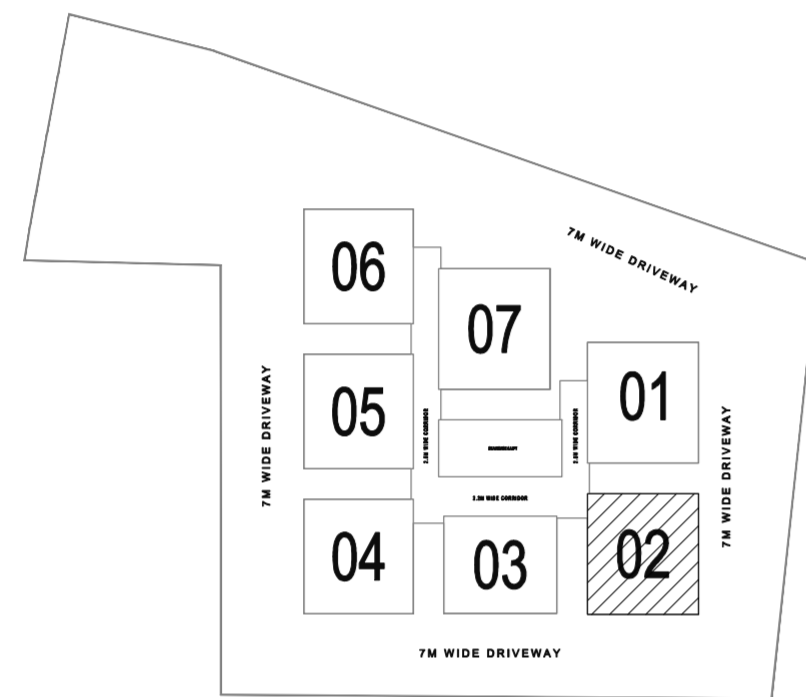
TYPICAL FLOOR PLAN

WEST FACING (3 BHK )

SALE AREA

2030 Sq.ft

KEY PLAN

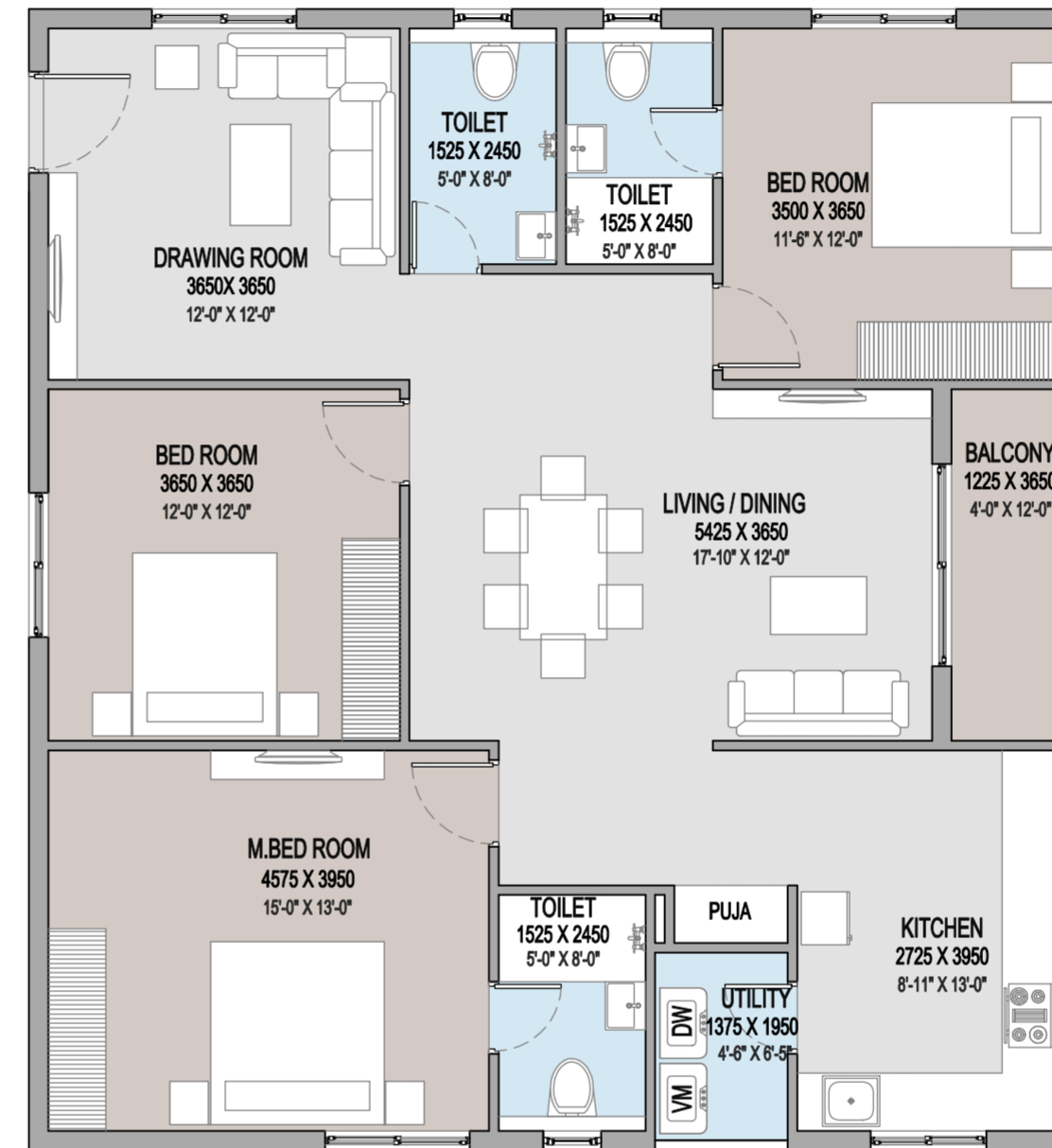


NOTE:

-GROUND FLOOR FLAT NO - 06,07 HAVE BEEN REMOVED FOR GYM AND BANQUET HALL.



2nd Floor, Ravisankar Arcade, behind Care Hospital line, Jayabheri Pine Valley, Gachibowli, Hyderabad, Mobile no: +91 98858 23482 / 99483 64726



1765 SFT

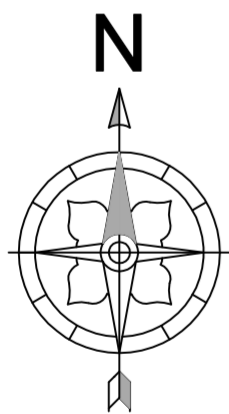
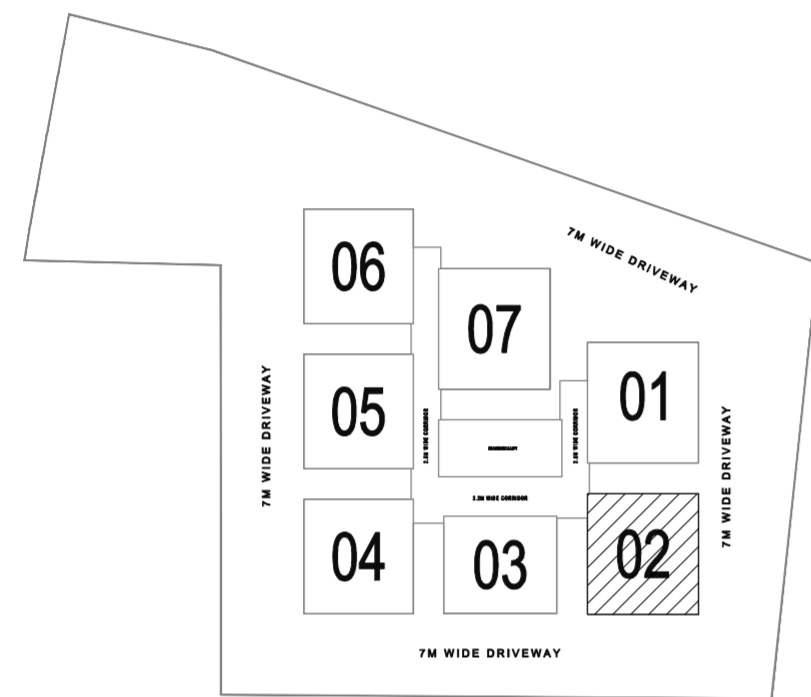
FIRST FLOOR PLAN

WEST FACING (3 BHK )

SALE AREA

1765 Sq.ft

KEY PLAN

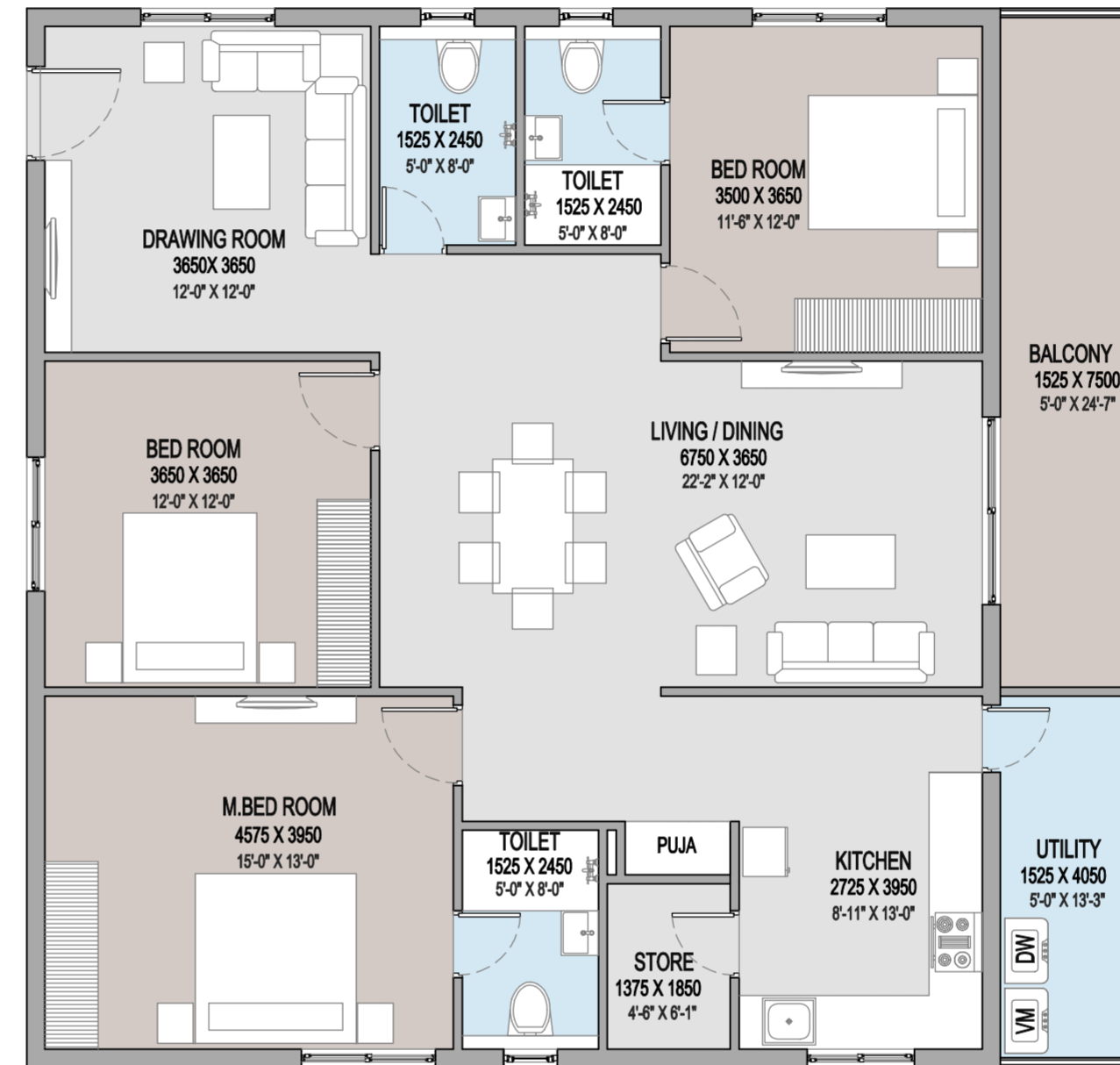


NOTE:

-GROUND FLOOR FLAT NO - 06,07 HAVE BEEN REMOVED FOR GYM AND BANQUET HALL.



2nd Floor, Ravisankar Arcade, behind Care Hospital line, Jayabheri Pine Valley, Gachibowli, Hyderabad, Mobile no: +91 98858 23482 / 99483 64726



2030 SFT

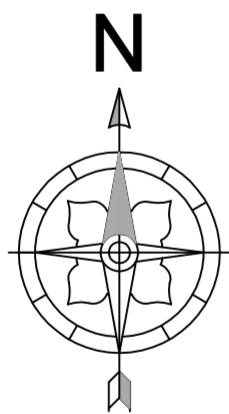
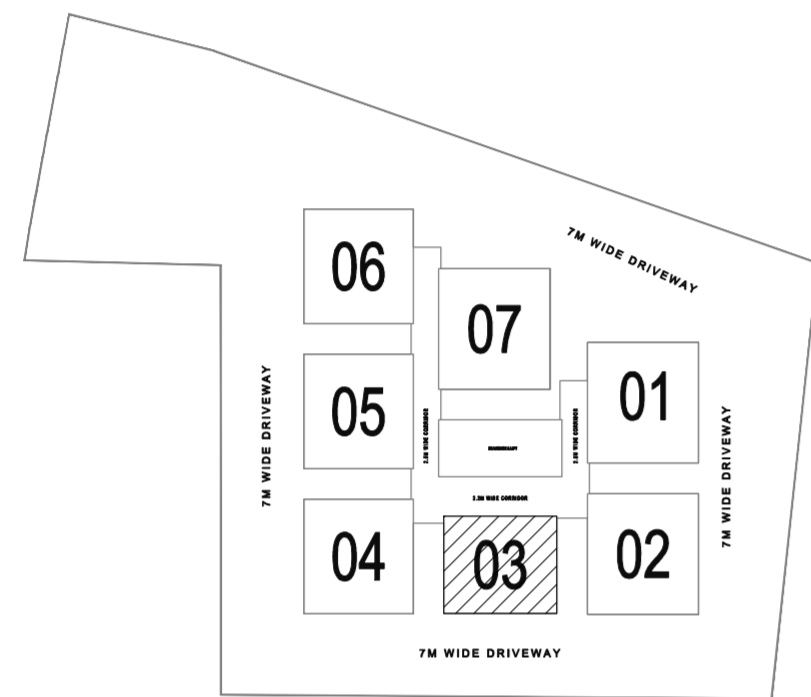
TYPICAL FLOOR PLAN

WEST FACING (3 BHK )

SALE AREA

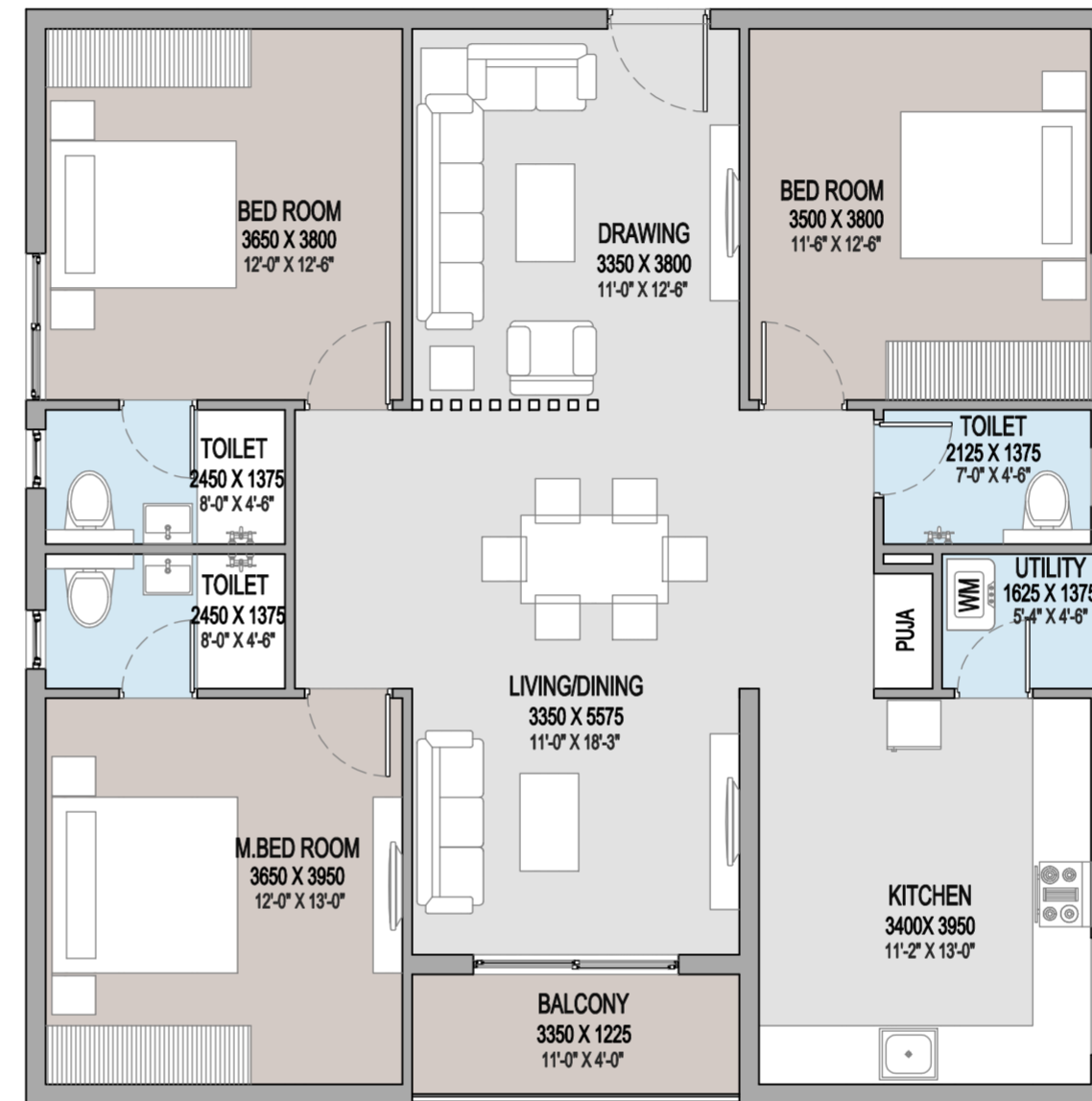
2030 Sq.ft

KEY PLAN



NOTE:

-GROUND FLOOR FLAT NO - 06,07 HAVE BEEN REMOVED FOR GYM AND BANQUET HALL.



1700 SFT

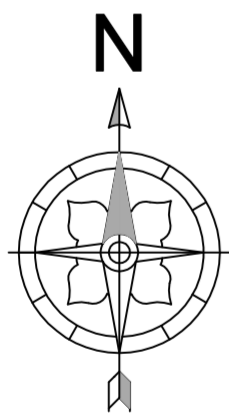
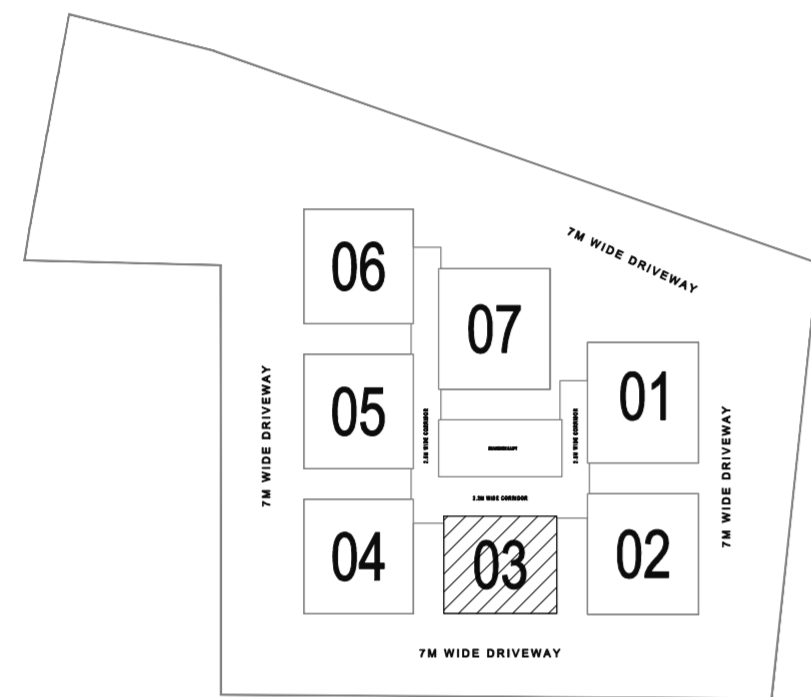
FIRST FLOOR PLAN

NORTH FACING (3 BHK)

SALE AREA

1700 Sq.ft

KEY PLAN

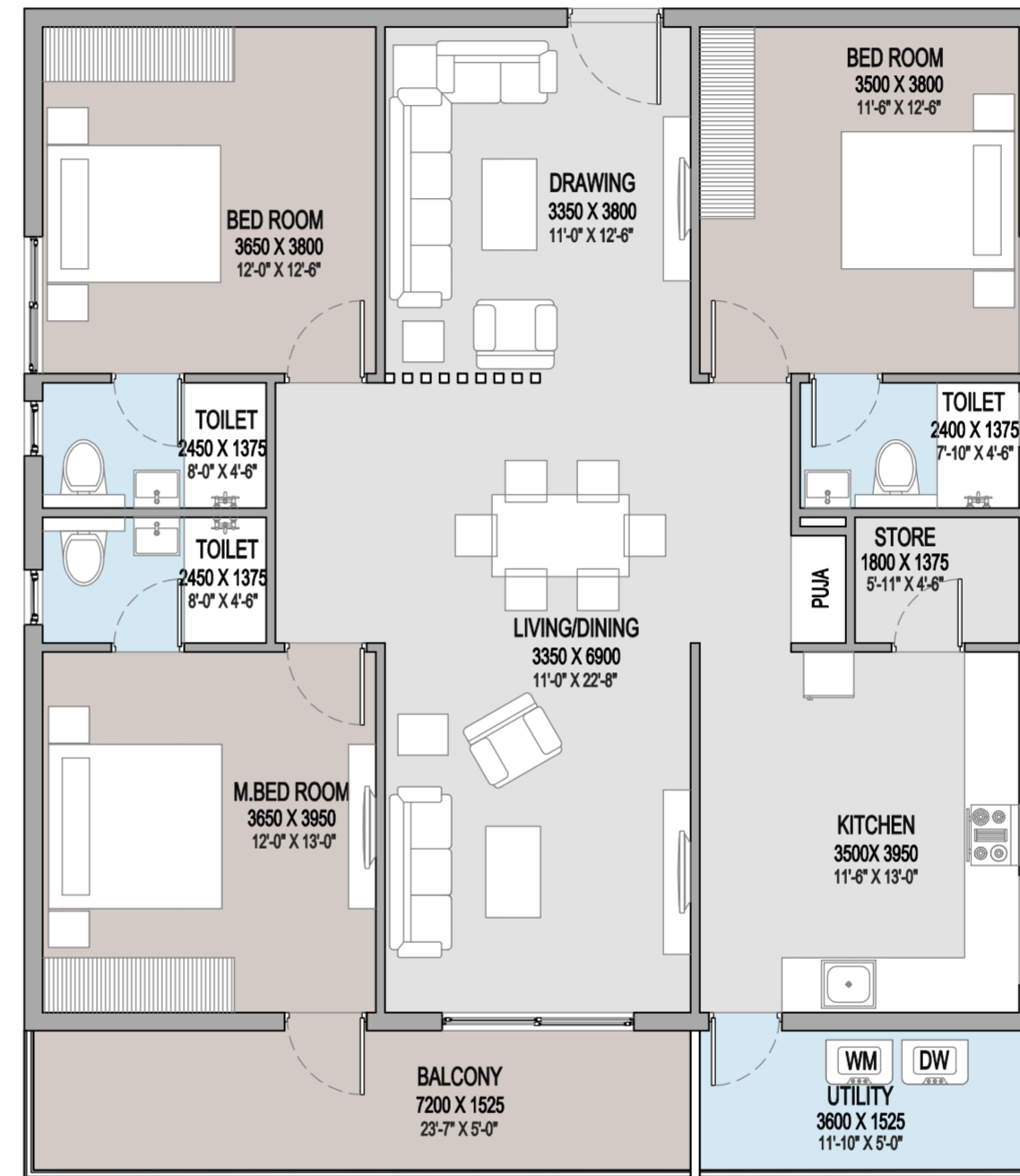


NOTE:

-GROUND FLOOR FLAT NO - 06,07 HAVE BEEN REMOVED FOR GYM AND BANQUET HALL.



2nd Floor, Ravisankar Arcade, behind Care Hospital  
line, Jayabheri Pine Valley, Gachibowli, Hyderabad,  
Mobile no: +91 98858 23482 / 99483 64726



1945 SFT

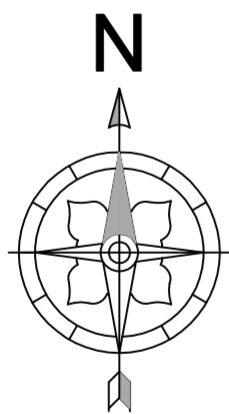
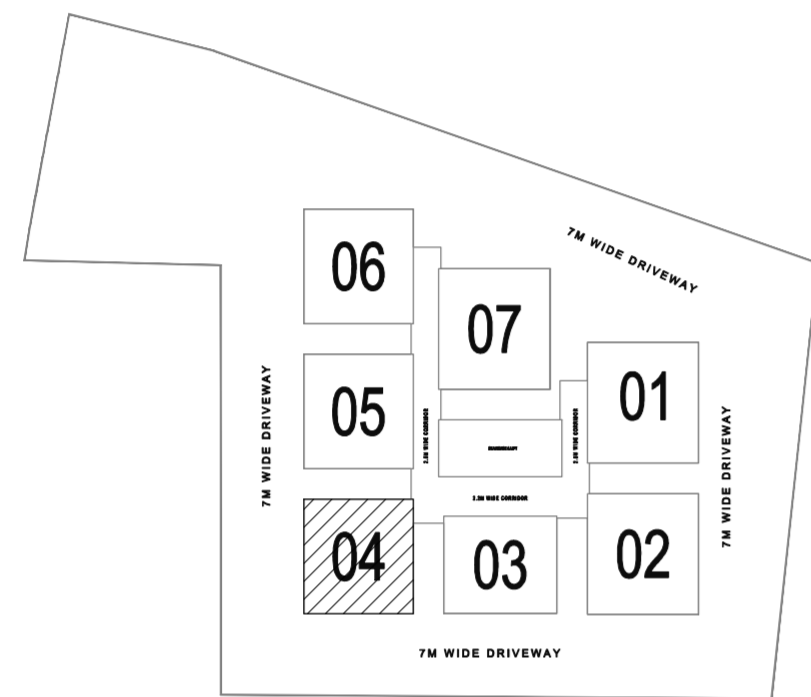
TYPICAL FLOOR PLAN

NORTH FACING (3 BHK )

SALE AREA

1945 Sq.ft

KEY PLAN

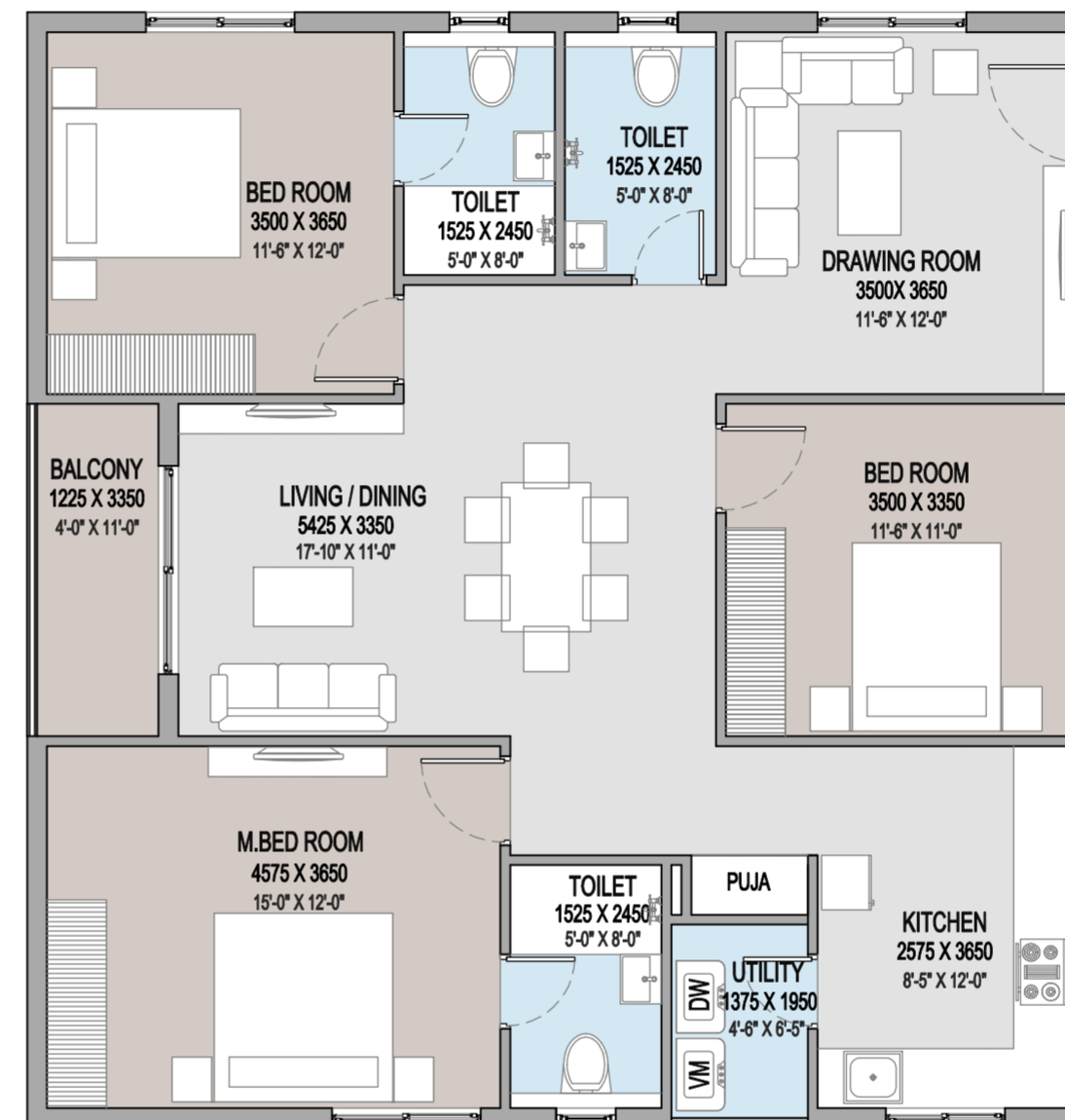


NOTE:

-GROUND FLOOR FLAT NO - 06,07 HAVE BEEN REMOVED FOR GYM AND BANQUET HALL.



2nd Floor, Ravisankar Arcade, behind Care Hospital line, Jayabheri Pine Valley, Gachibowli, Hyderabad, Mobile no: +91 98858 23482 / 99483 64726



1655 SFT

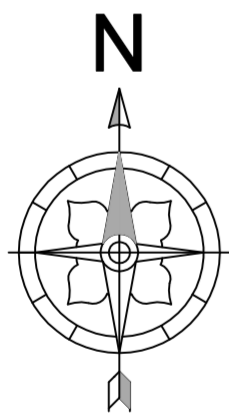
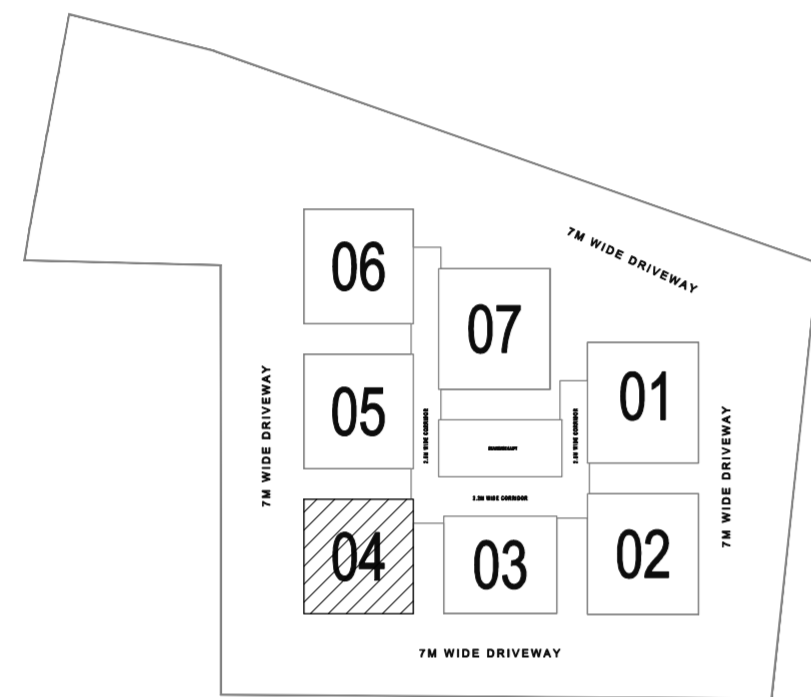
FIRST FLOOR PLAN

EAST FACING (3 BHK)

SALE AREA

1655 Sq.ft

KEY PLAN

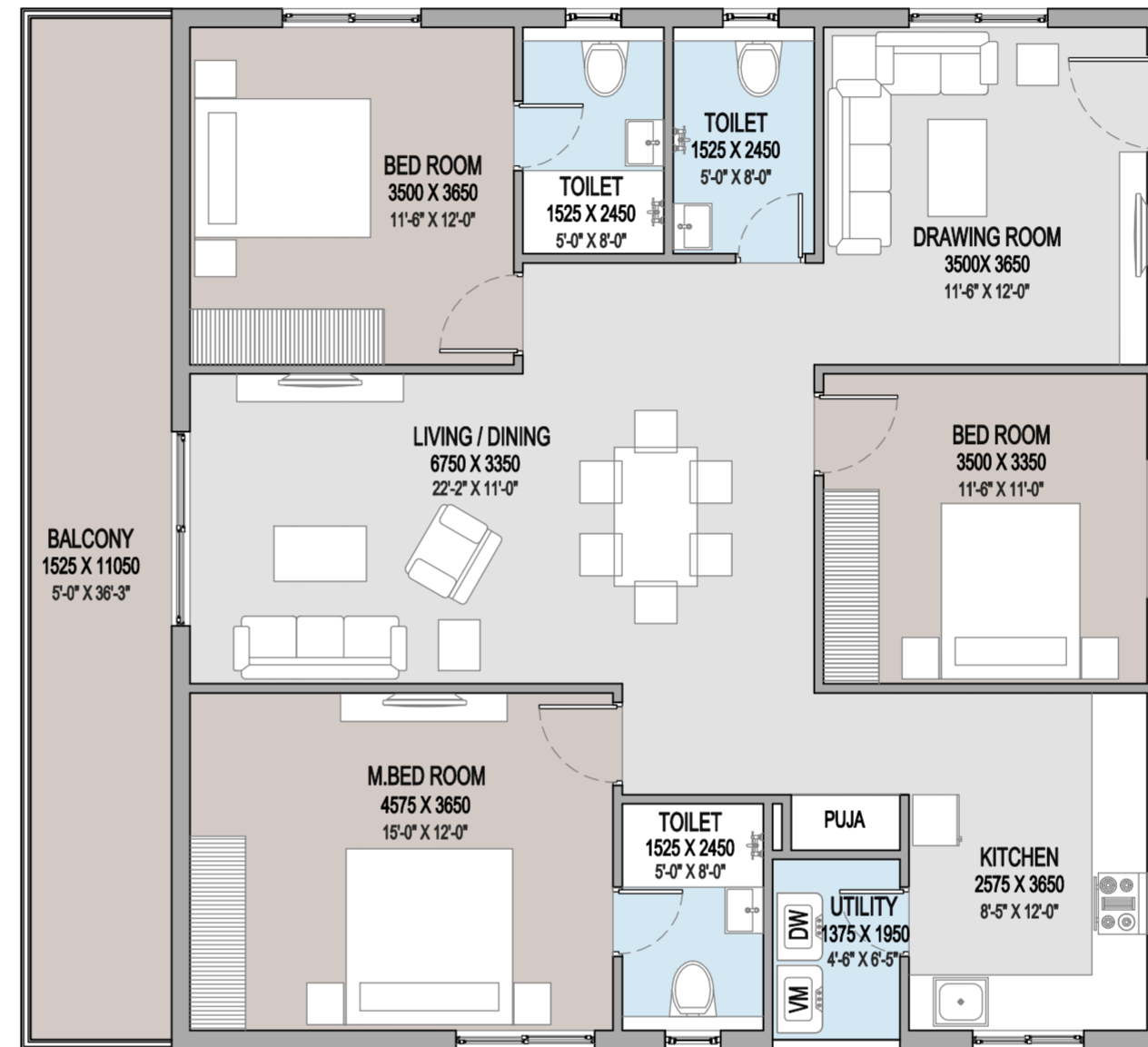


NOTE:

-GROUND FLOOR FLAT NO - 06,07 HAVE BEEN REMOVED FOR GYM AND BANQUET HALL.



2nd Floor, Ravisankar Arcade, behind Care Hospital line, Jayabheri Pine Valley, Gachibowli, Hyderabad, Mobile no: +91 98858 23482 / 99483 64726



1905 SFT

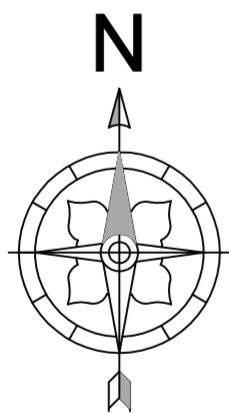
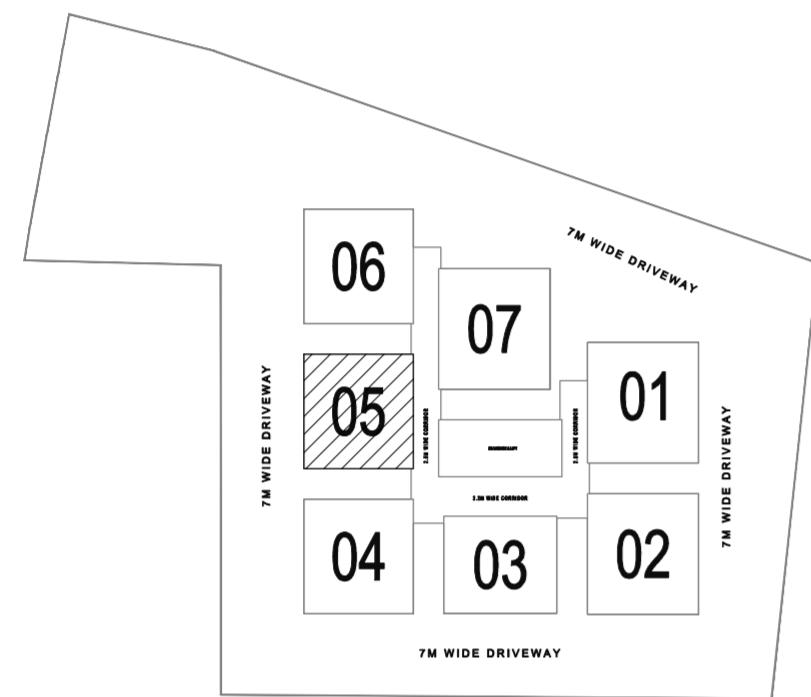
TYPICAL FLOOR PLAN

EAST FACING (3 BHK)

SALE AREA

1905 Sq.ft

KEY PLAN

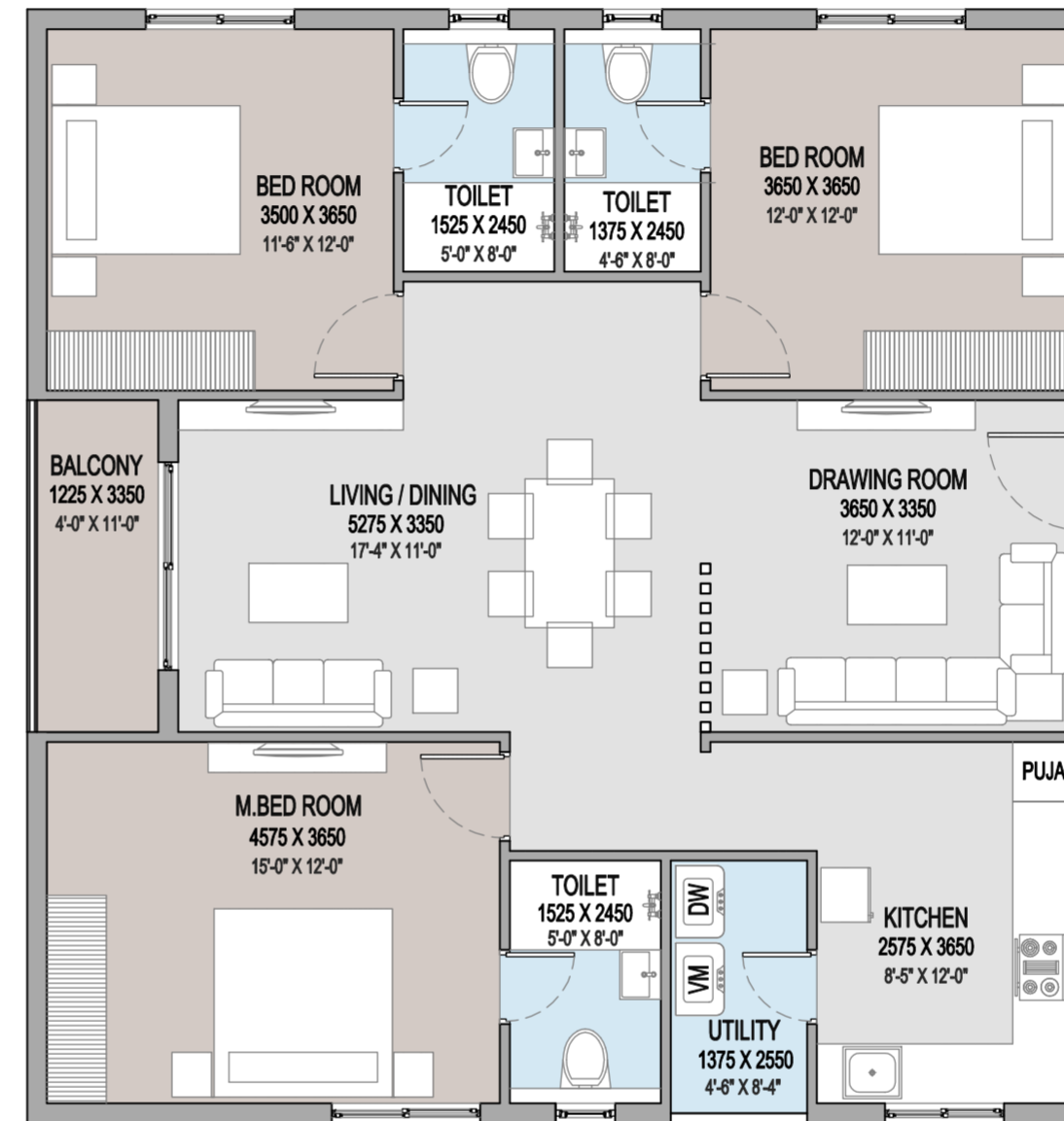


NOTE:

-GROUND FLOOR FLAT NO - 06,07 HAVE BEEN REMOVED FOR GYM AND BANQUET HALL.



2nd Floor, Ravisankar Arcade, behind Care Hospital line, Jayabheri Pine Valley, Gachibowli, Hyderabad, Mobile no: +91 98858 23482 / 99483 64726



1655 SFT

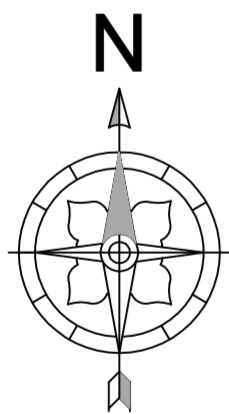
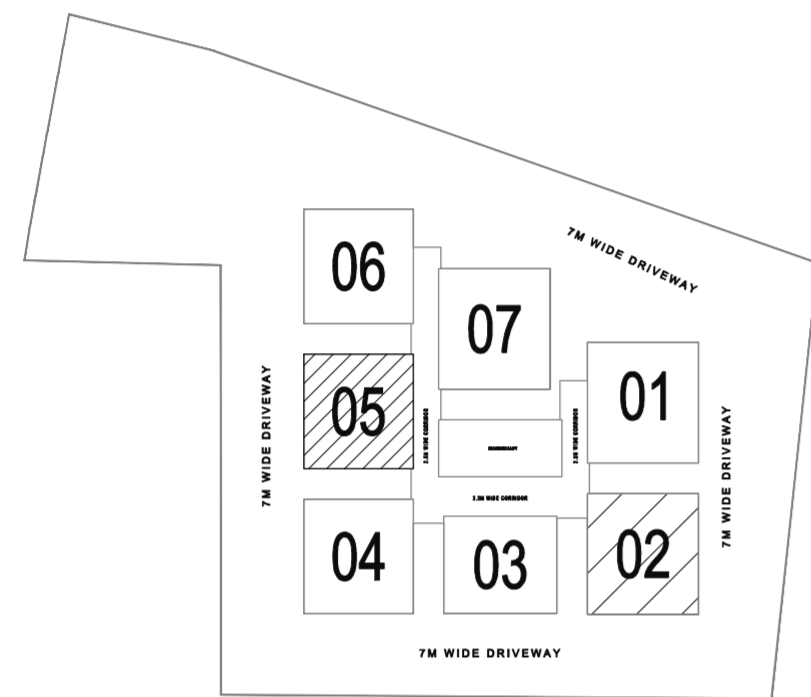
FIRST FLOOR PLAN

EAST FACING (3 BHK)

SALE AREA

1655 Sq.ft

KEY PLAN

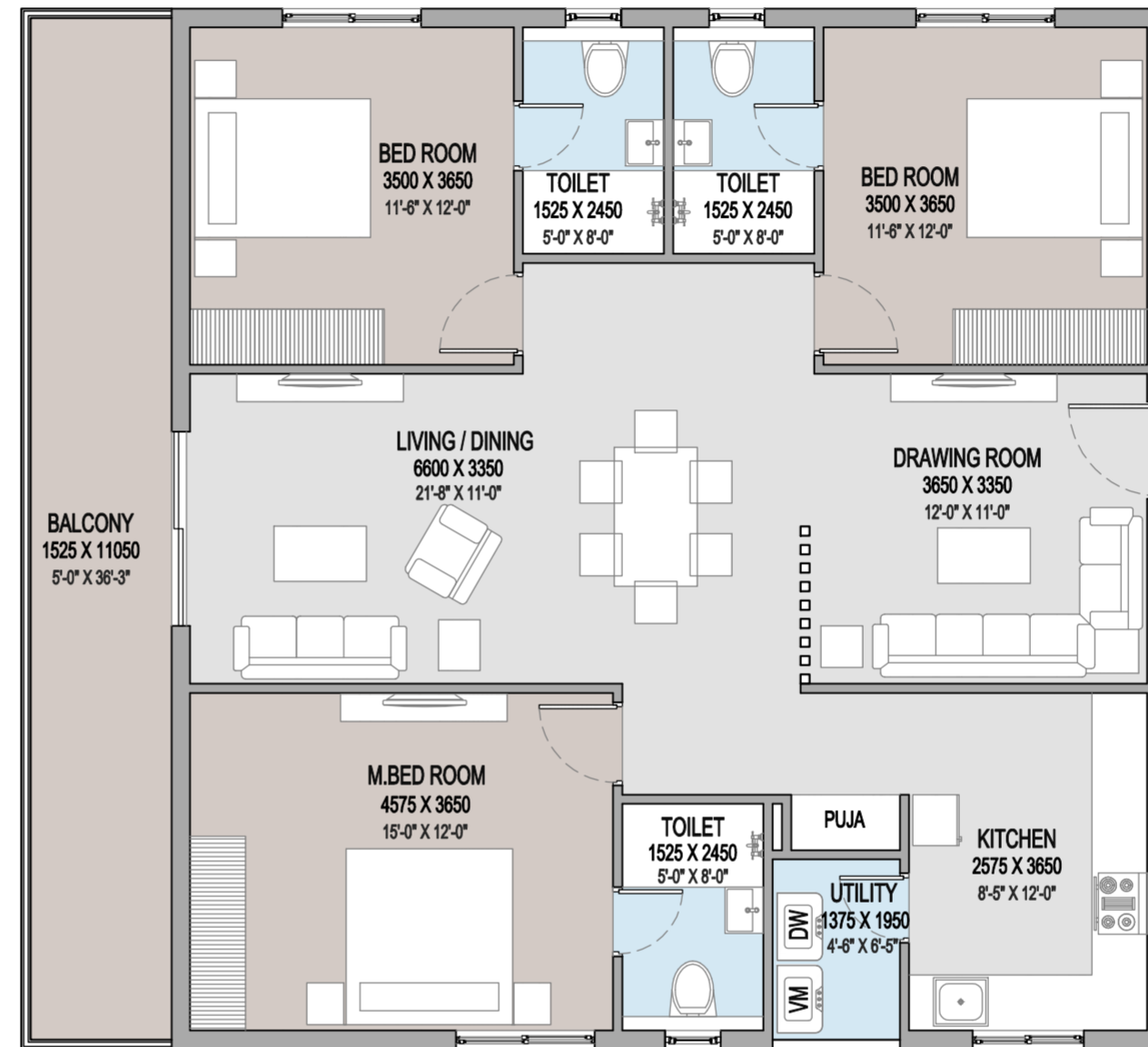


NOTE:

-GROUND FLOOR FLAT NO - 06,07 HAVE BEEN REMOVED FOR GYM AND BANQUET HALL.



2nd Floor, Ravisankar Arcade, behind Care Hospital line, Jayabheri Pine Valley, Gachibowli, Hyderabad, Mobile no: +91 98858 23482 / 99483 64726



1905 SFT

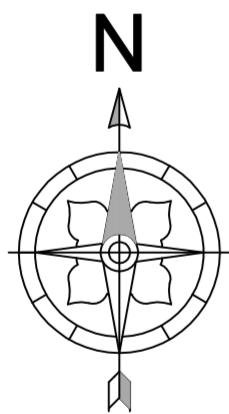
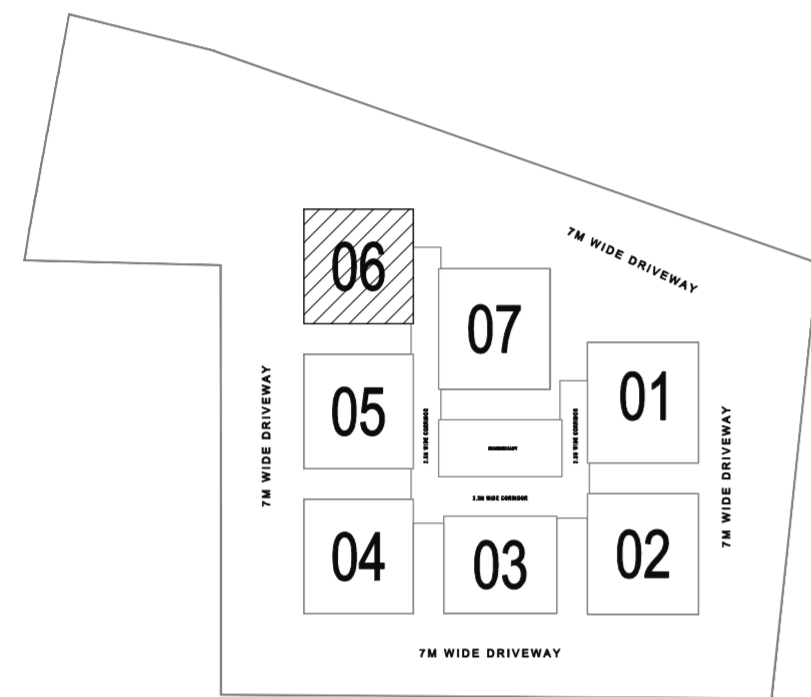
TYPICAL FLOOR PLAN

EAST FACING (3 BHK)

SALE AREA

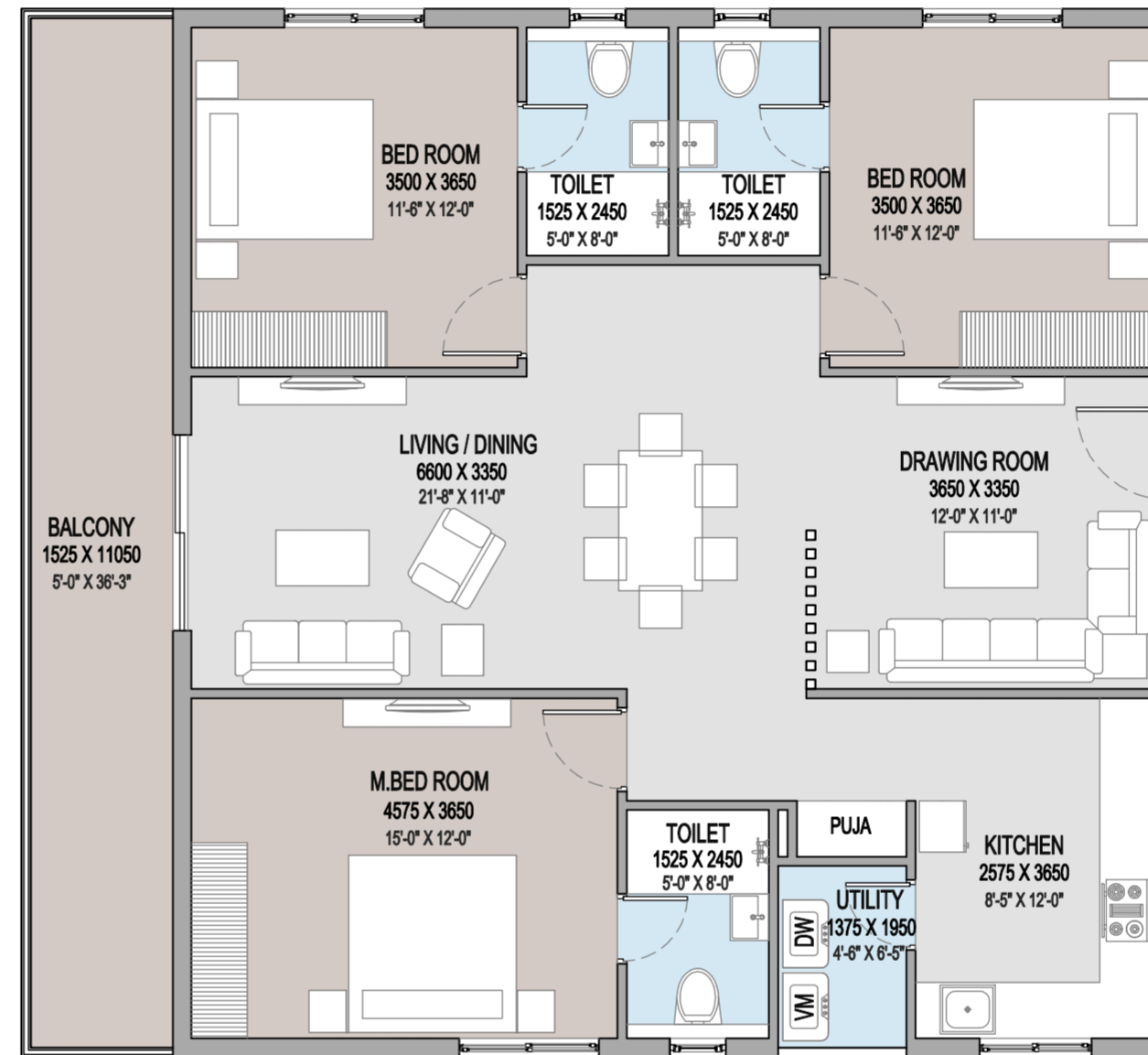
1905 Sq.ft

KEY PLAN



NOTE:

-GROUND FLOOR FLAT NO - 06,07 HAVE BEEN REMOVED FOR GYM AND BANQUET HALL.



1905 SFT

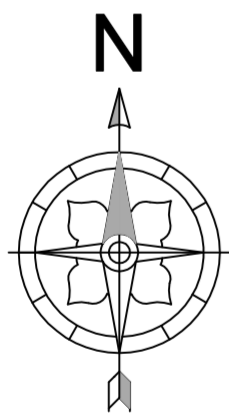
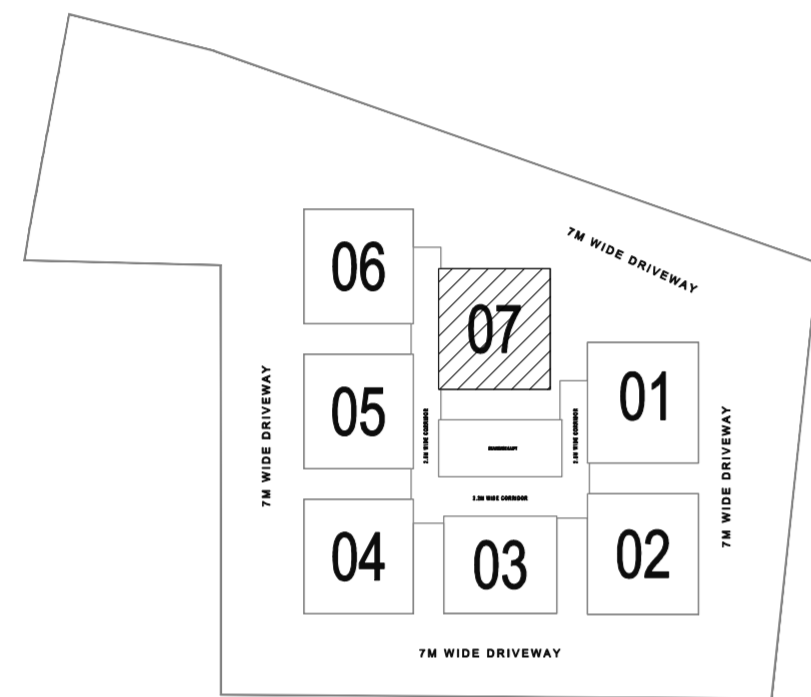
TYPICAL FLOOR PLAN

EAST FACING (3 BHK)

SALE AREA

1905 Sq.ft

KEY PLAN

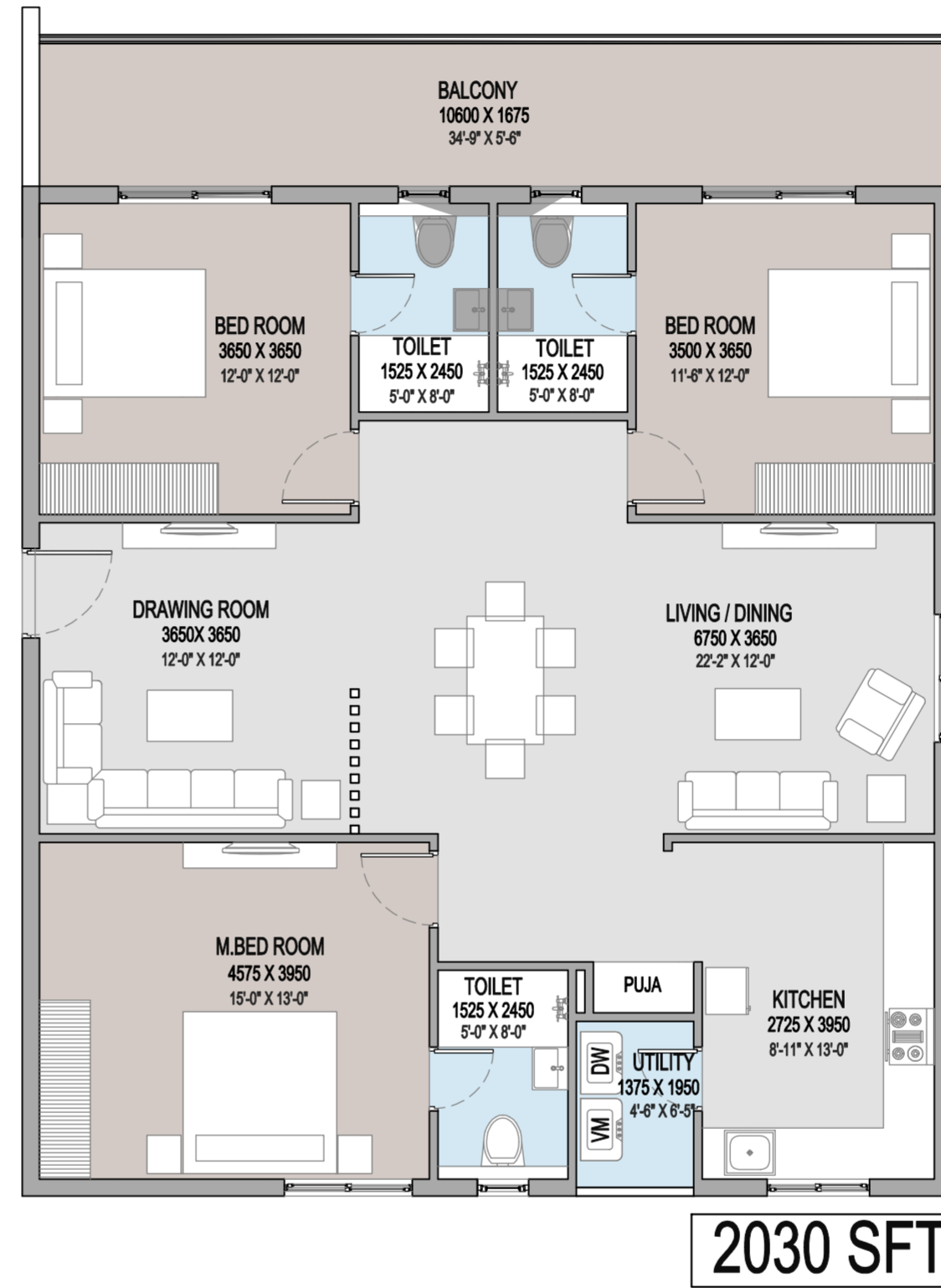


NOTE:

-GROUND FLOOR FLAT NO - 06,07 HAVE BEEN REMOVED FOR GYM AND BANQUET HALL.



2nd Floor, Ravisankar Arcade, behind Care Hospital line, Jayabheri Pine Valley, Gachibowli, Hyderabad, Mobile no: +91 98858 23482 / 99483 64726



TYPICAL FLOOR PLAN

WEST FACING (3 BHK )

SALE AREA

2030 Sq.ft